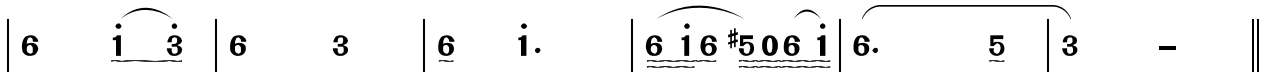
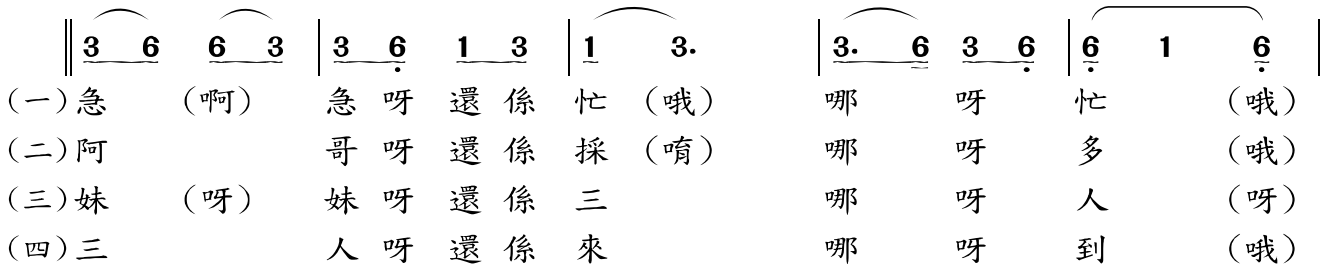
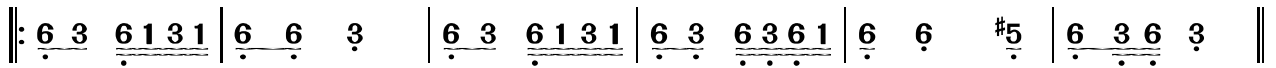
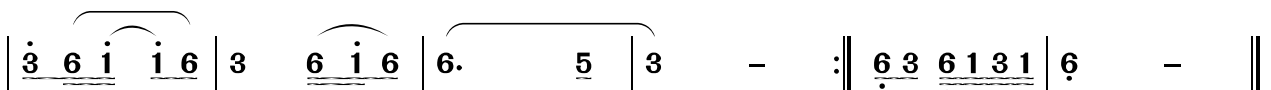
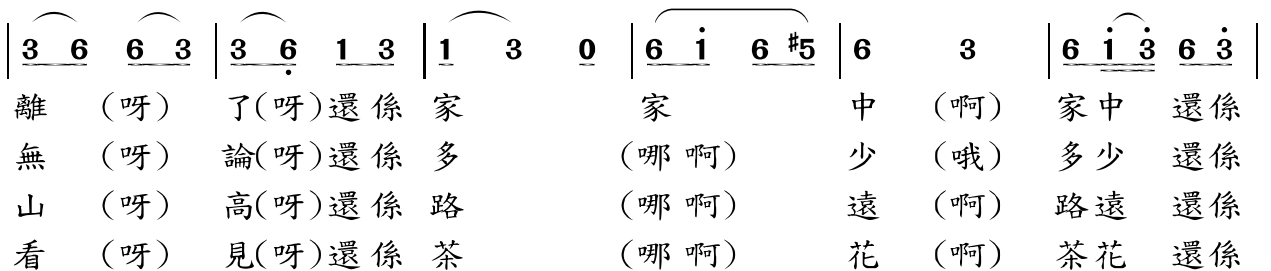
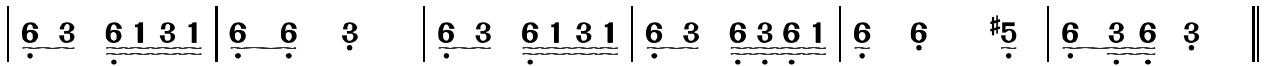


上山採茶

採譜：鄭榮興

1=B $\frac{2}{4}$ 

離 呀 了 哦 家 (啊) 哪 唉 唷
 妹 呀 採 呀 少 (哦) 哪 唉 唷
 上 呀 山 呀 嶺 (哦) 哪 唉 唷
 茶 呀 山 呀 上 (啊) 哪 唉 唷



去 (唷) 採 (哪) 茶
 採 (唷) 回 (哪) 家
 也 (唷) 著 (哪) 行
 開 (唷) 滿 (哪) 坪